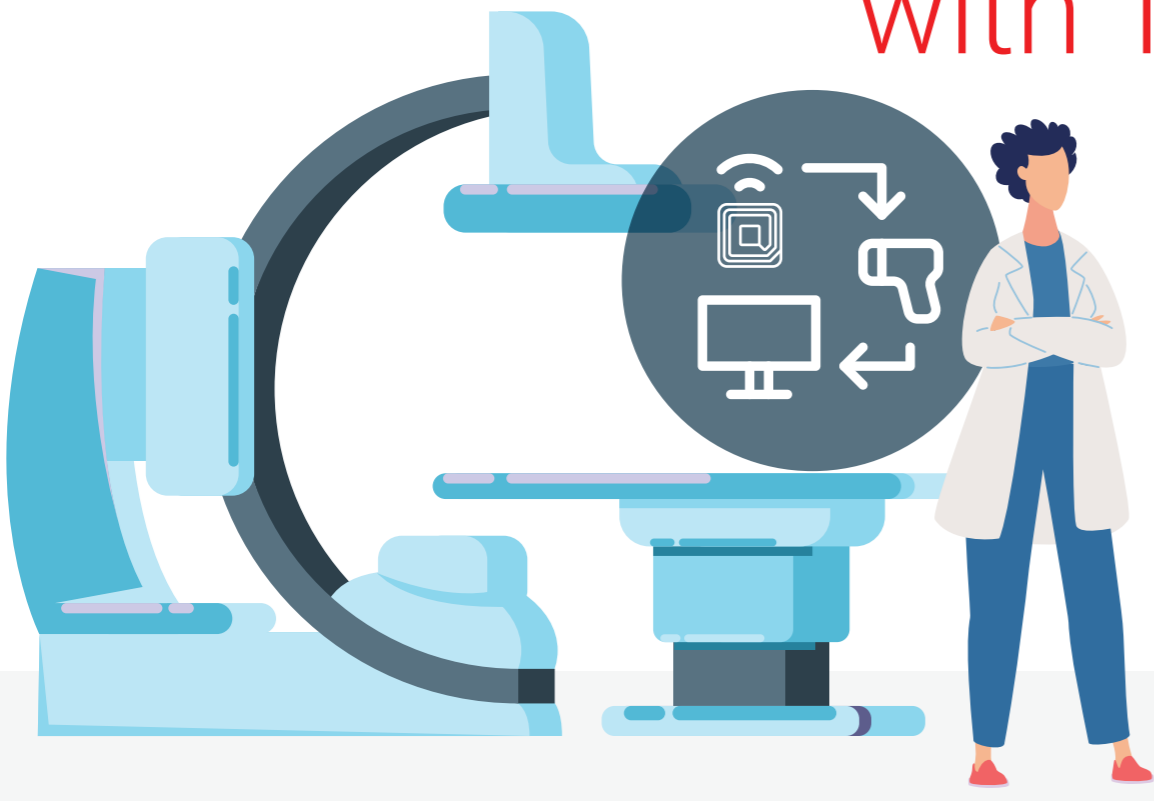


# Overcome 5 Major Cath Lab Supply Barriers with Technology



Cardiovascular services are among the top clinical areas of healthcare expenditures and typically are among the top financially performing services within hospitals. Yet despite this fact, many cath labs struggle to positively contribute to a hospital's bottom line. Here is how to overcome the top five supply chain barriers in your cath lab to improve financial and supply chain performance.

## BARRIER 1

### 6-20%

Lab nurses and techs spend 6-20% of their time looking for and gathering supplies.<sup>1</sup>



### Inventory Procurement Processes

How to overcome it

Optimize productivity and workflow processes with data-driven storage solutions to maintain reliable stock levels, minimize storage footprint and reduce supply search time.

## BARRIER 2

### \$250,000

One hospital discovered an excess spend of over \$250,000 per year in expired inventory.<sup>2</sup>



### Expired Product Management

How to overcome it

Eliminate stock waste and expiry by implementing RFID and barcode technology systems to reduce supply-related errors and overspending.

## BARRIER 3

### 84%

84% of cath lab managers say supply search has the most negative impact on workplace productivity.<sup>3</sup>



### Distractions

How to overcome it

Track clinicians' product consumption and provide them with inventory visibility to avoid disruptions in their workflows.

## BARRIER 4

### 50%

Close to 50% of hospitals still use manual processes to manage supplies.<sup>3</sup>



### Miscommunication

How to overcome it

Increase efficiency through automated data entry and real-time tracking to help capture accurate case costs with scanning technologies.

## BARRIER 5

### 17%

Only 17% of hospitals use automated or data-driven solutions.<sup>4</sup>



### Monitoring Performance

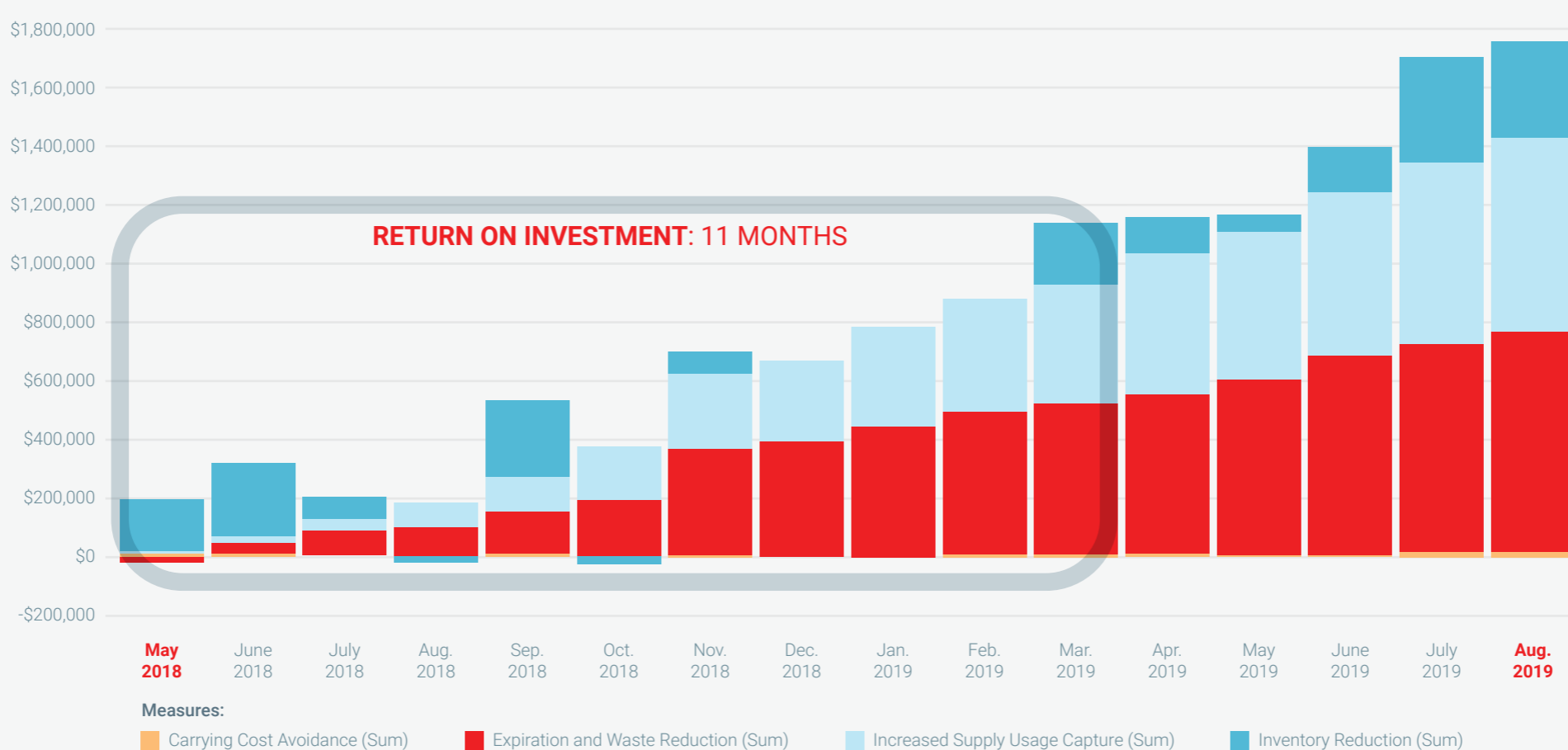
How to overcome it

Track and trace the movement of each item in your cath lab with data capture technologies to gain meaningful analytics and make it easier to proactively monitor low, high, chargeable and planned consumption.

With the help of an intuitive point-of-use system and advanced technologies, supply chain optimization can be achieved alongside an increased organizational ROI.

## REAL EXAMPLE

### Cumulative Gains Progression: Cath Lab of a large IDN in the Southeast U.S.<sup>5</sup>



Elite™ Healthcare POU solutions can respond to your inventory needs and clinical requirements on one supply chain platform.

SPEAK TO A HEALTHCARE SUPPLY CHAIN EXPERT >>>>



#### Sources

<sup>1</sup> Automate inventory management in the cardiac cath lab: The time is now, Becker's Hospital Review, May 2016, <https://www.beckershospitalreview.com/supply-chain/automated-inventory-management-in-the-cardiac-cath-lab-the-time-is-now.html>

<sup>2</sup> Tecsys Case Study: Cath Labs at Munson Healthcare, <https://infohub.tecsys.com/hubs/Case-Studies/Munson-Healthcare-Tecsys-Case-Study.pdf>

<sup>3</sup> Healthcare Supply Chain Tasks Are "Stressing Out" Clinicians, Fred Donovan, May 2019, <https://hitinfrastructure.com/news/healthcare-supply-chain-tasks-are-stressing-out-clinicians>

<sup>4</sup> 10 High-Value Use Cases for Predictive Analytics in Healthcare, Jennifer Bresnick, September 2018, <https://healthitanalytics.com/news/10-high-value-use-cases-for-predictive-analytics-in-healthcare>

<sup>5</sup> Tecsys Customer Success Story of a large IDN in the Southeast U.S.